

# MyLab™ X9

## Opening infinite horizons



NEVER STOP SEEING THE UNSEEN.

 **saote**

When research is oriented towards the evolution of products and solutions for the continuous improvement of diagnosis in terms of imaging and workflow, when research is focused on expanding technological potential, and exploring unexplored horizons, the result is pure innovation.



EXPLORING THE INSIDE .

# Opening infinite horizons

Powerful and **innovative**, MyLab™X9 is the new Esaote **X ULTRA™** platform, with embedded state-of-the-art technologies and top-level image quality, to explore infinite horizons in ultrasound imaging.

Artificial Intelligence combined with an insightful workflow and **comprehensive multimodality connectivity** lead the radiologist towards new diagnostic frontiers.

Intelligent architecture, Italian design and premium ergonomics elevate the everyday **clinical experience** as never before.



INNOVATION



IMAGE QUALITY



CLINICAL EXPERIENCE



CONNECTIVITY

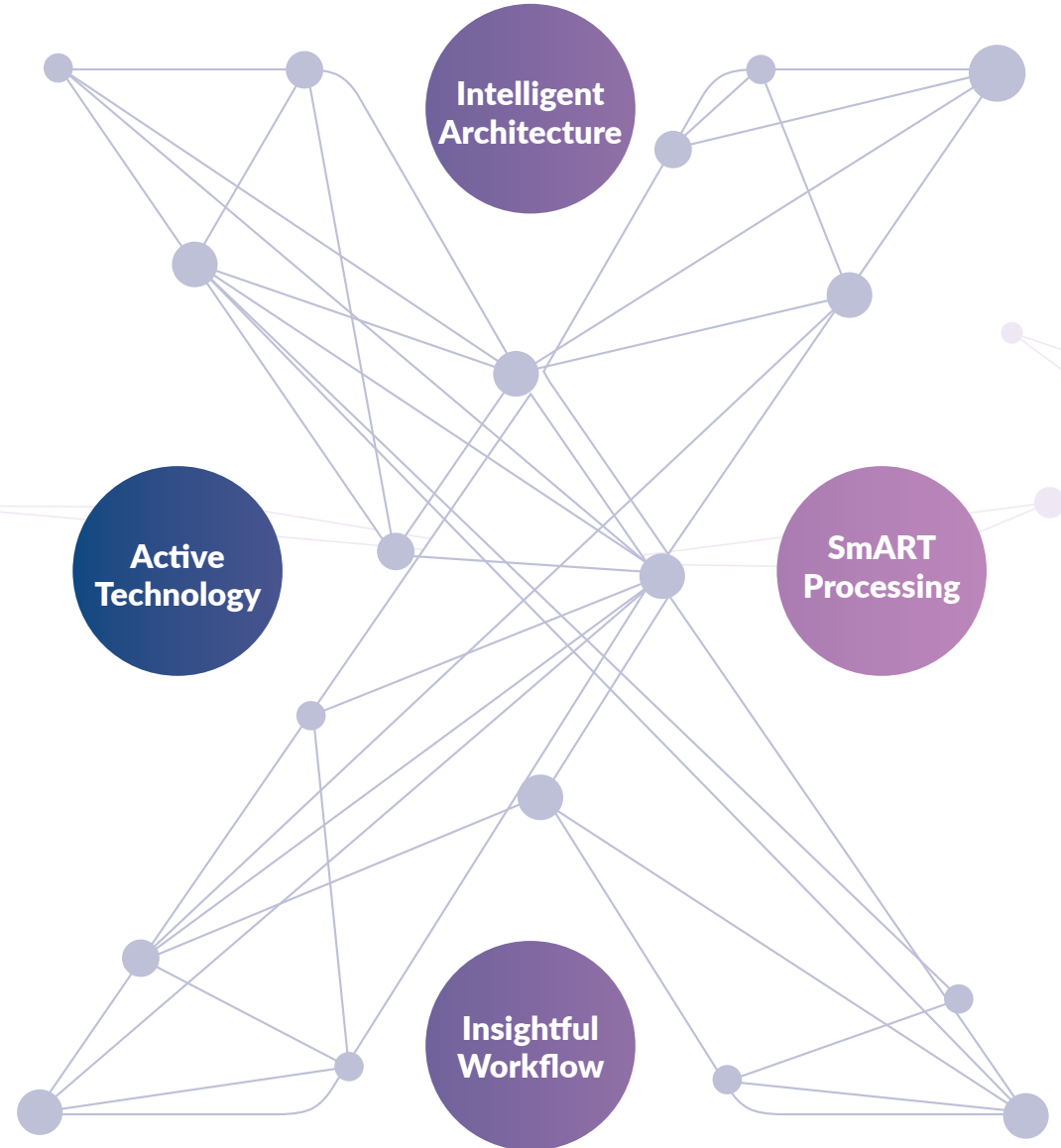


CUSTOMER CARE



# Infinite horizons in innovation

**X**ULTRA™  
P L A T F O R M





Thanks to the new 64-bit **Intelligent Architecture** and faster GPU computing capabilities\*, new processing techniques enable multitasking to maximize efficiency in all working conditions.



Embedded-core **Active Technology** combined with **iQProbes** deliver smart focalization and color quantification processing to reach unprecedented performance.

\*vs previous product line



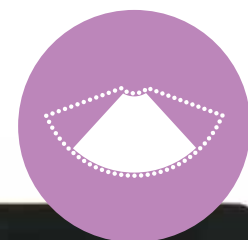
State-of-the-art **smART Processing** with Empowered New Generation XView, MView, and @Speed ultrasound velocity setting enhance image quality for immediate diagnosis.



**Insightful Workflow:** @Scan, @Doppler, **AutoOB**, and **Zero-click** technologies elevate the clinical experience.

**More focus on patients**, less on parameters, with the exclusive @asyMode and @asyColor intuitive finger-touch image optimization and intelligent algorithms.

# Infinite horizons in image quality



The high-quality **Barco Eonis** display presents sharp, bright images with high contrast and a wide viewing angle. Eonis uses the latest advancements in LED backlight technology, ensuring a **higher brightness** that can be maintained over a longer period of time.

The display's unique front consistency sensor ensures fast power-up and continuous **luminance stability**.

Broaden your horizons with **Full screen capability** and **Extended Field of View** modality.

**iQProbe active technology** with appleprobe, for a stress-free and ergonomic experience, high sensitivity matching layers, thermal efficiency, and **Single Crystal Technology** provide optimal spatial and contrast resolution to achieve **top-level** image quality.



# Infinite horizons in connectivity and multimodality

@ Streaming technology enables **real-time streaming** of ultrasound exams, together with Camera on your tablet, phone or laptop, opening up a new era in connectivity.

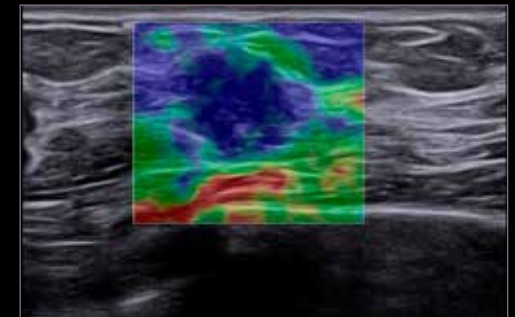
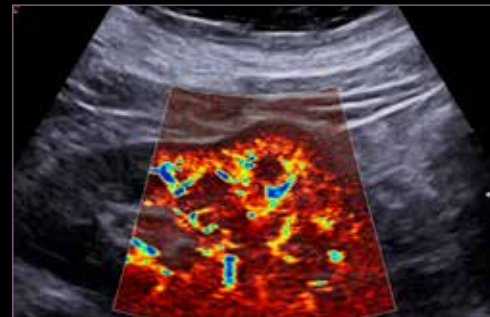
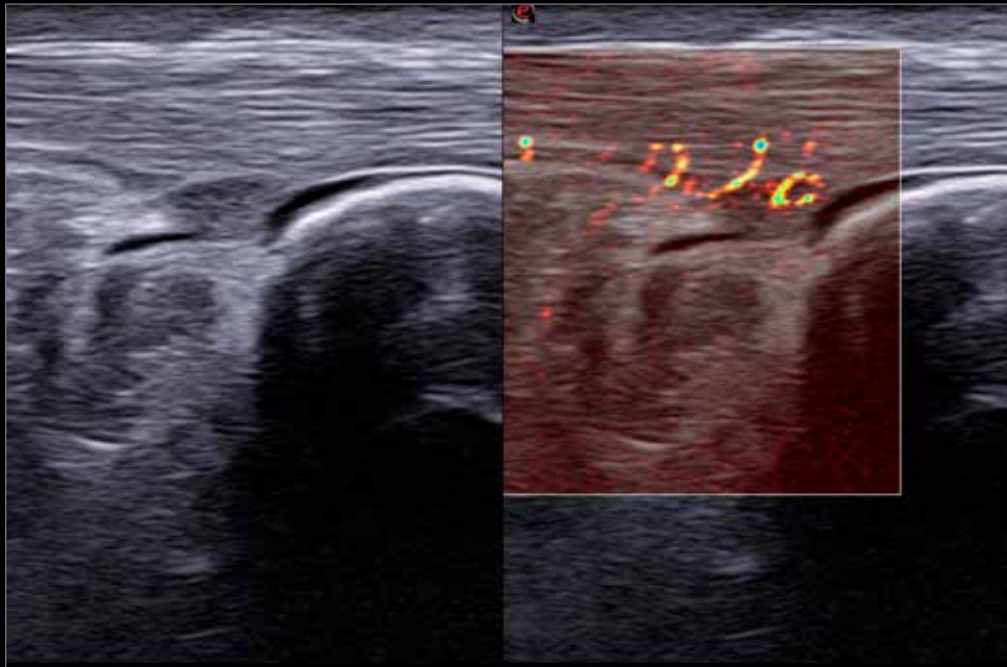
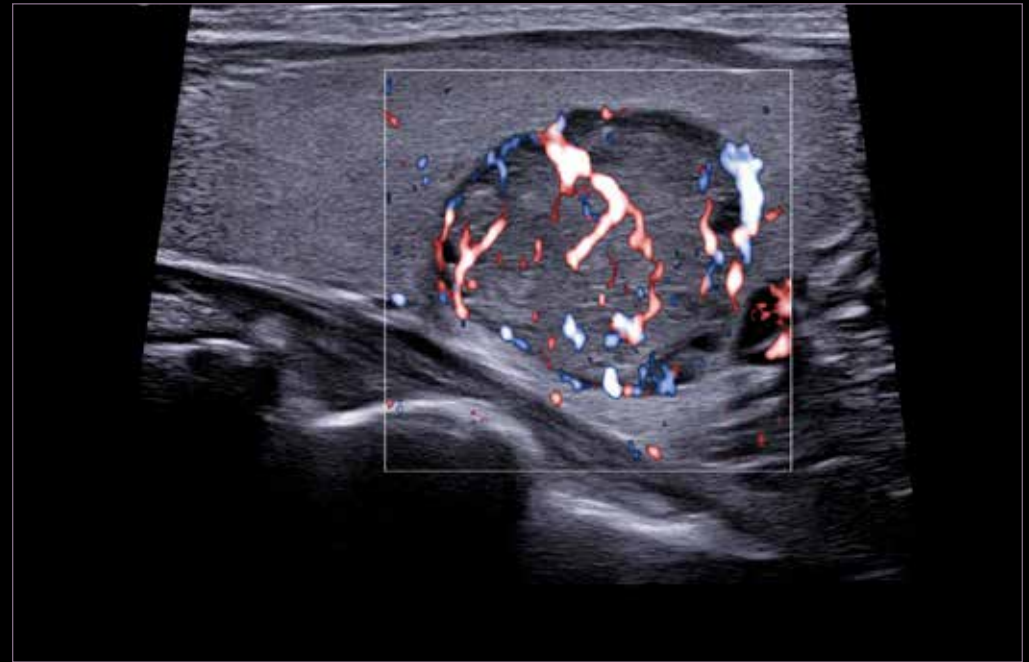
**Multimodality Archive** as the key point for effective patient follow-up:

- Full **DICOM** connectivity, including Q/R
- MyLab™Desk evo
- MyLab™Tablet



# Infinite horizons in General Imaging and Radiology

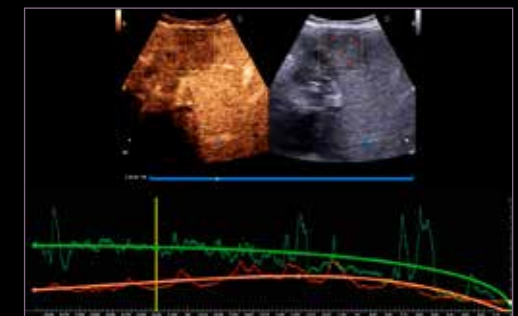
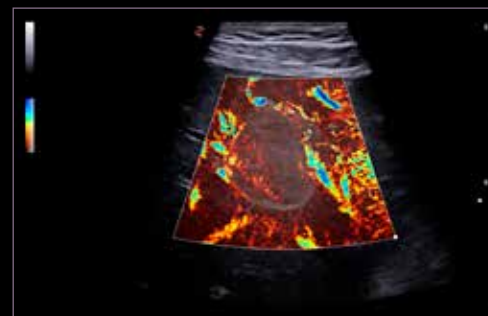
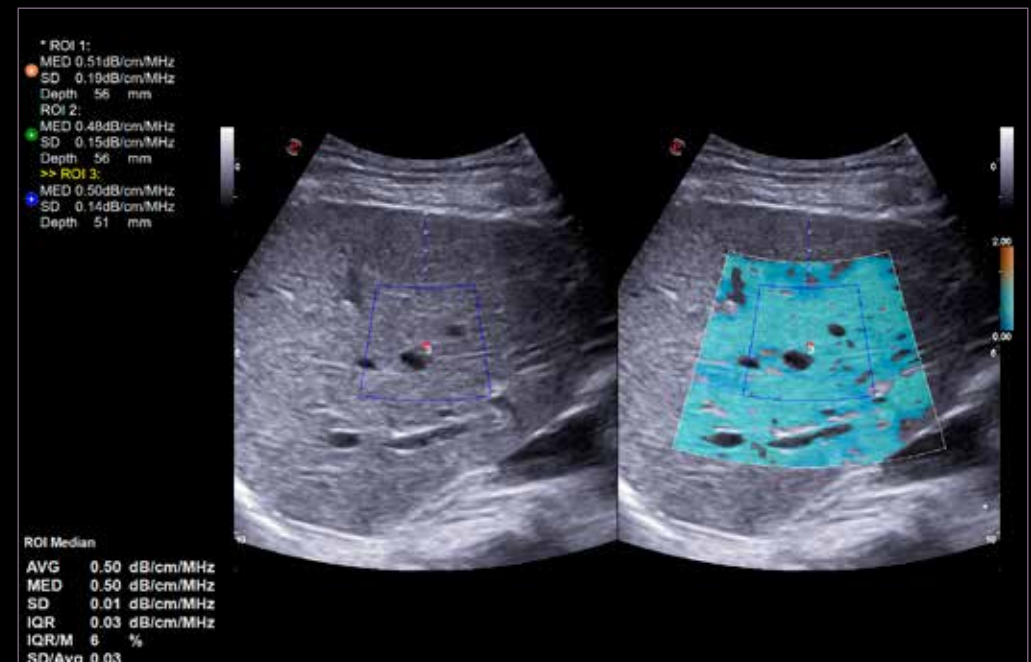
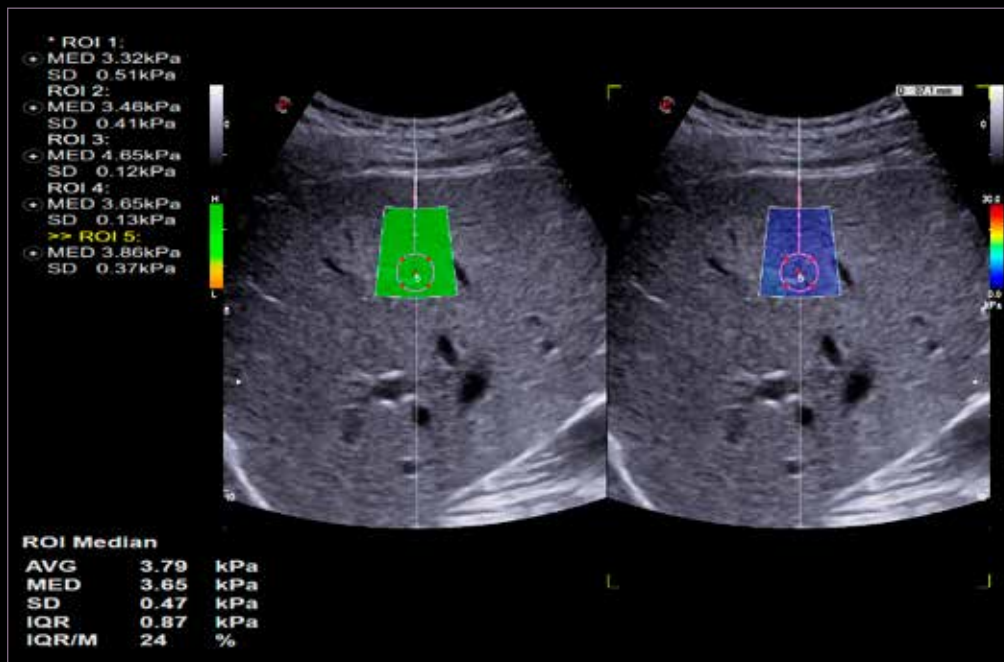
**Optimal image quality**, even in the most **challenging clinical conditions**, is the key to support accurate diagnosis.  
The perfect answer to every need in General Imaging and Radiology.





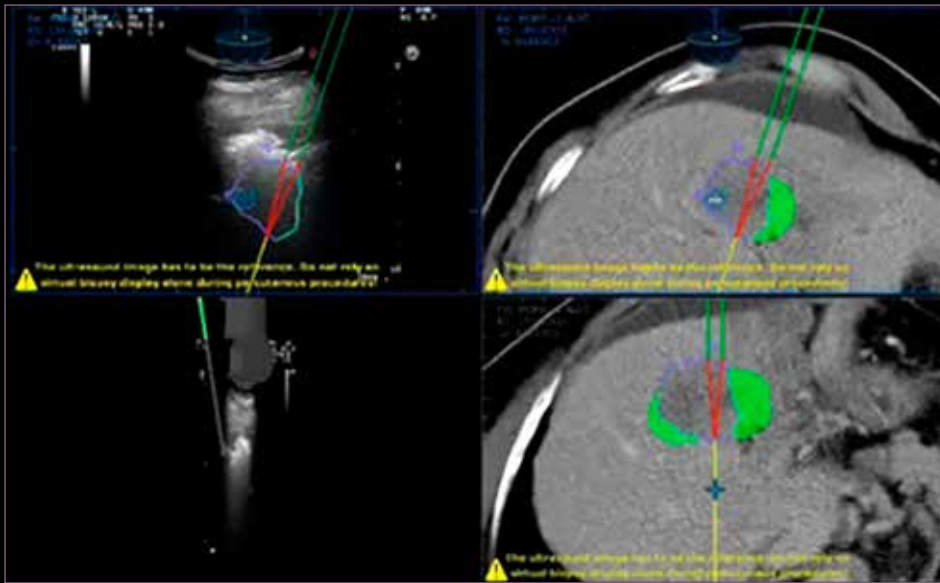
# Infinite horizons in Liver Imaging

A complete solution to help **detection, monitoring** and **treatment** of hepatic lesions and chronic liver diseases, with a **multiparametric approach** to support integrated diagnosis and therapy guidance.



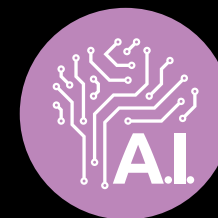
# Infinite horizons in Interventional Imaging

Designed to provide with the most effective path to patient care, **MyLab™X9** embeds advanced technologies such as **fusion imaging** and **Virtual Navigator**, together with **dedicated probes** and **MyLabRemote** to assist in the most challenging interventional procedures, with the best image guidance.

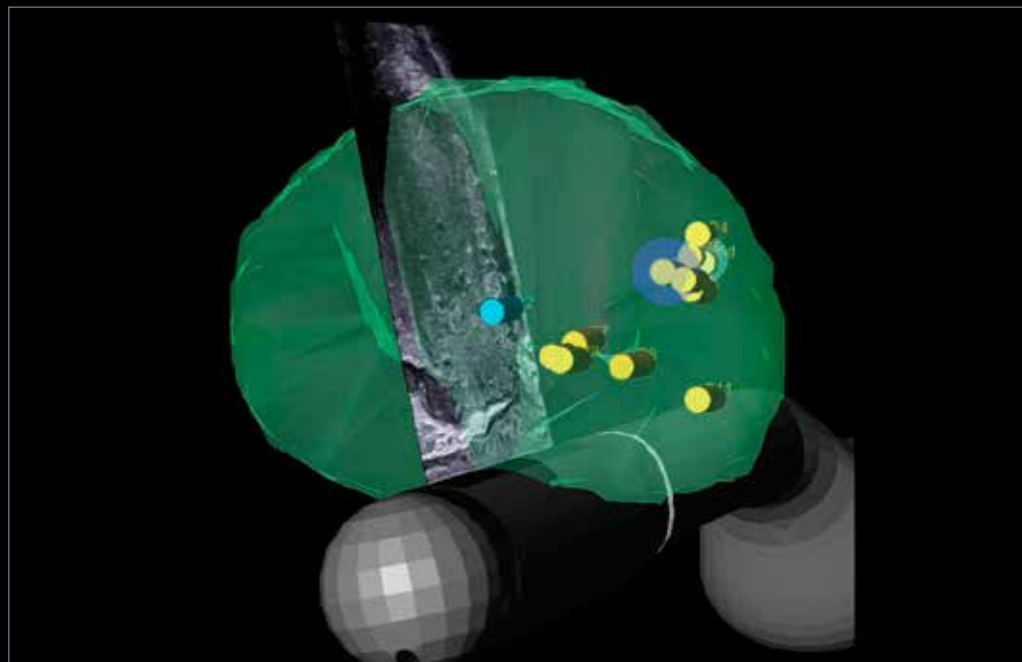
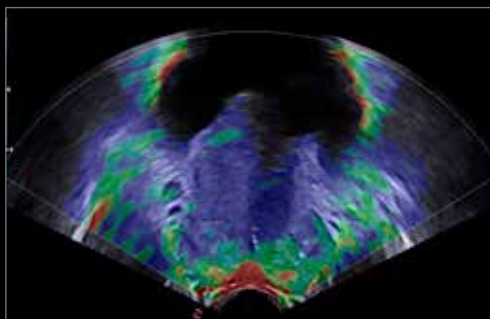
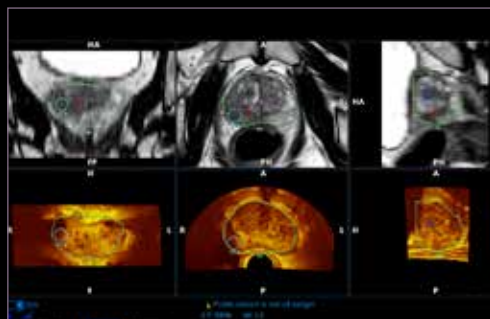


# Infinite horizons in Urology Imaging

MyLab™ X9

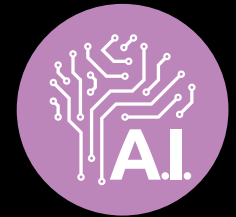


MyLab™ X9 includes Urology-dedicated technologies, such as the brand-new **UroFusion**, powered by A.I., providing **fusion imaging with automatic US-MRI synchronization**, to guide real-time targeted prostate biopsies.

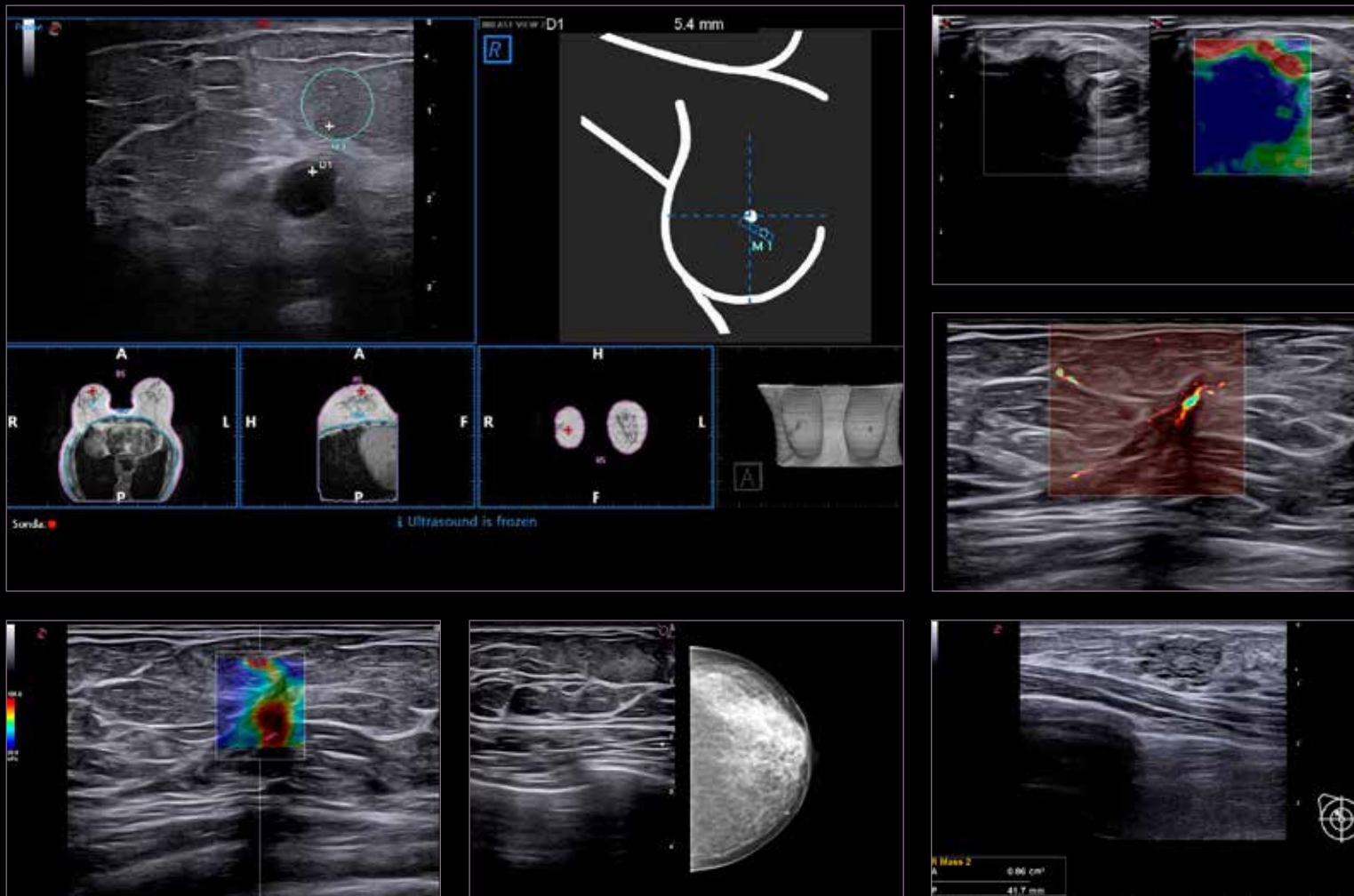


Transrectal and transperineal transducers

# Infinite horizons in Breast Imaging

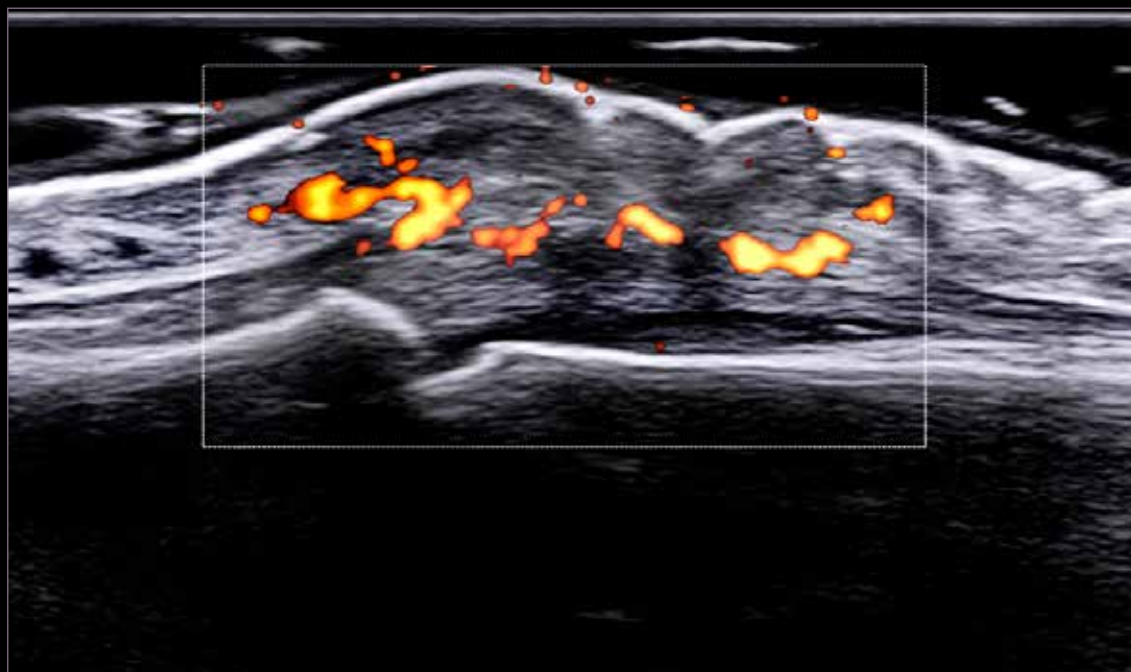
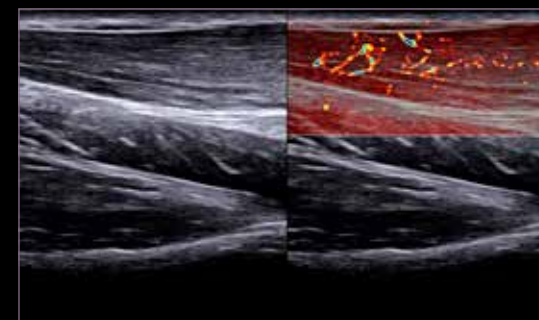
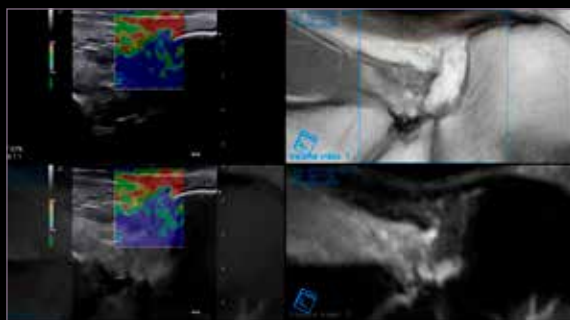


Committed to patient care, Esaote provides a complete package of advanced technologies to assist physicians in **lesion detection**, **characterization** and **follow-up**. With the unique **BreastNav™MRI** feature and its use of Artificial Intelligence, a prone MRI dataset and Ultrasound real-time fusion imaging is now possible.

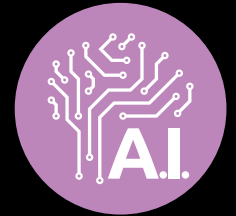


# Infinite horizons in Superficial Imaging

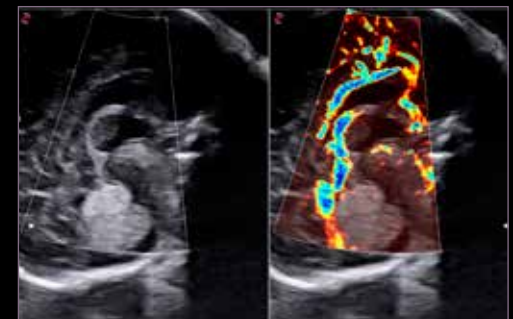
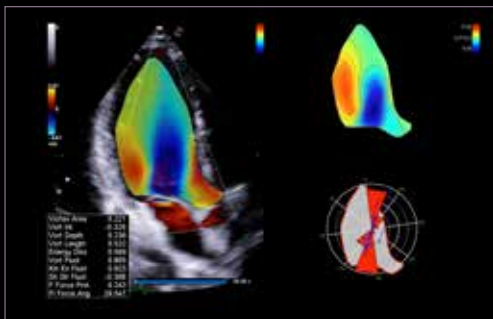
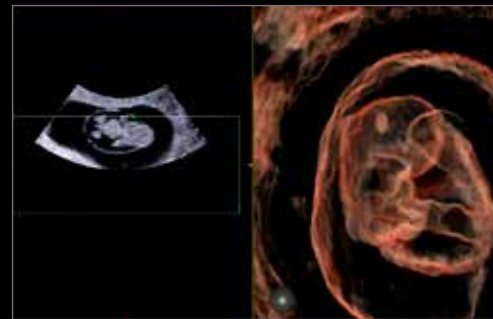
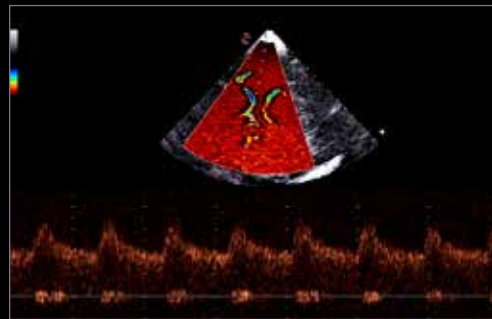
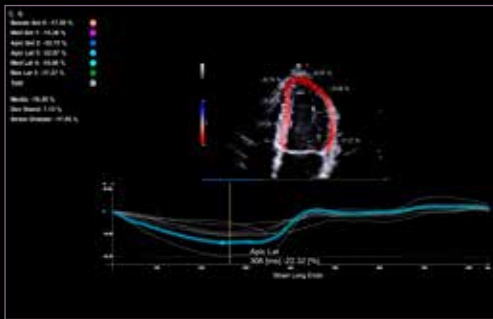
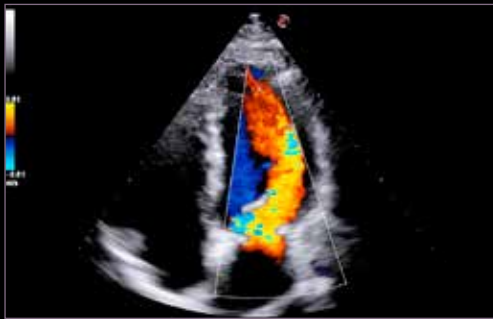
As a consolidated partner of MSK, Sports Medicine, Esaote introduces unprecedented quality to **superficial imaging**, with **MyLab™ X9**. Lesion detection, treatment and follow-up of the injury recovery process are supported by the complete range of up to **25MHz** probes and dedicated technologies, such as **QPack** for vascularization level quantification and **QElaXto 2D** for the assessment of tissue stiffness.



# Infinite horizons in Shared Service



With its ultrasound-centric approach, MyLab™X9 guarantees **360° shared-service solutions** to cover every discipline from Women's Health to Cardiovascular and Neurosonology applications, by embedding Artificial Intelligence to take one step forward in the facilitation of workflow.





**3-year  
service  
coverage**



## **Remote Technical Support**

MyLab™X9 is designed to provide an optimal user experience, via remote assistance, console control sharing, and remote training, to meet any request quickly and effectively.



## **Probe Coverage**

The S@renity program provides coverage for all standard probes, with no annual limits.



## **On-site Corrective Maintenance**

The S@renity program provides On-Site Corrective Maintenance, including the labor and spare parts needed to repair the system.

Our mission is to **protect** and **maximize** system **performance** by increasing the return on your investment.

To pursue this goal, Esaote has created **S@renity program, 3-year service coverage to focus solely on diagnosis.**

*Conditions for additional service coverage may vary depending on your country. Contact your Esaote reference for the conditions applicable to your country. Special probes excluded. Accidental damage of probes is not covered. MyLab™X9 probe set in standard configuration: coverage of four spare part failures due to accidental damage; peripherals excluded. Remote Service Support requires a high-speed direct Internet connection and depends on regional availability and connection speed.*



[www.esaote.com](http://www.esaote.com)

160000294MA Ver.02



Esaote S.p.A. - sole-shareholder company  
Via Enrico Melen 77, 16152 Genova, ITALY, Tel. +39 010 6547 1, Fax +39 010 6547 275, [info@esaote.com](mailto:info@esaote.com)

MyLab is a trademark of Esaote spa. BreastNav™ and BreastNav™ MRI are powered by Medcom GmBH. CnT1™: The use of Contrast Agents in the USA is limited by FDA to left ventricle opacification and to characterization of focal liver lesions. Technology and features are system/configuration dependent. Specifications subject to change without notice. Information might refer to products or modalities not yet approved in all countries. Product images are for illustrative purposes only. For further details, please contact your Esaote sales representative.

Please visit us online  
for more information

